



Montreal, May 5, 2020

**COVID-19 – reopening of schools – EPCA Survey to parents.**

---

Between April 28 to May 4, 2020 EPCA conducted a survey in an effort to get a better understanding of the parental needs for the reopening of schools set to take place on May 11 and May 19, 2020 respectively.

EPCA will use this information to inform and guide the government of Quebec of our community needs during the transition back to schools.

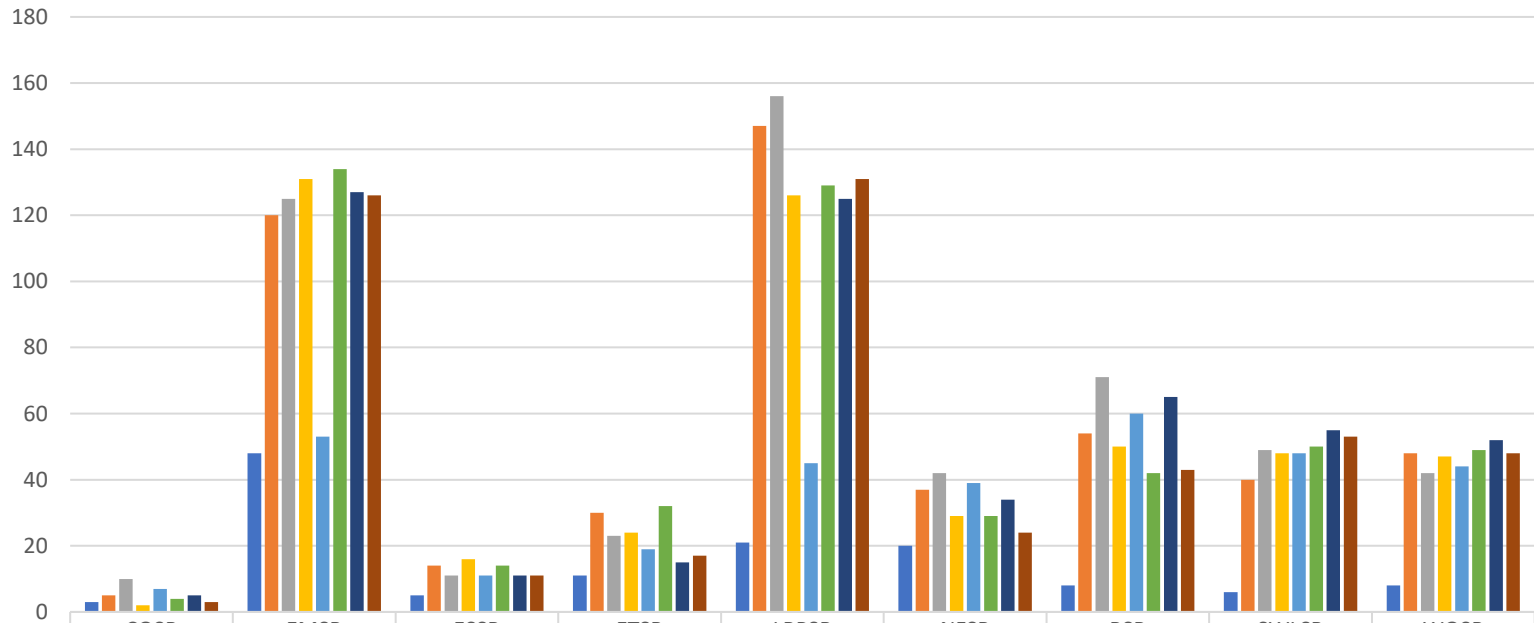
The survey was distributed to various parental groups via Facebook, partner organizations, email distribution list, EPCA board of directors and parent committee chairs.

**TOTAL FAMILIES: 3 555**

**REPRESENTING: 4 828 STUDENTS**

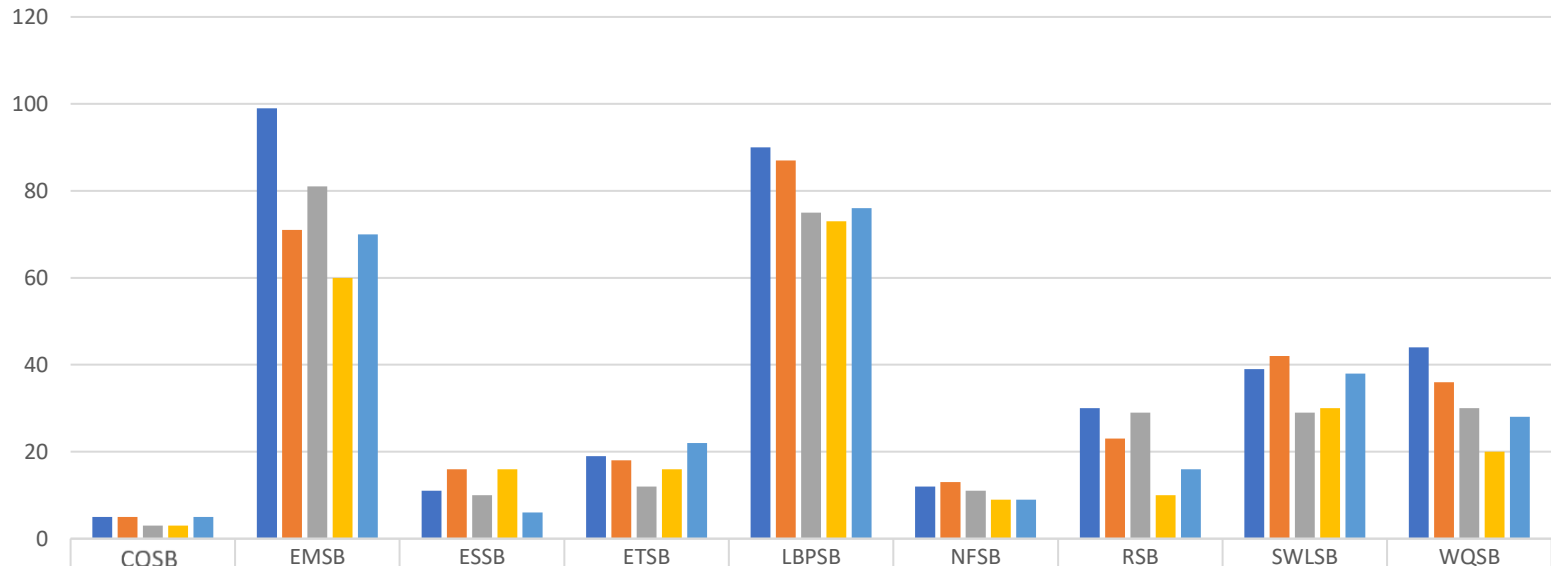
**ELEMENTARY: 3 381 and SECONDARY 1 447**

### What grade(s) is (are) your child(ren) in?



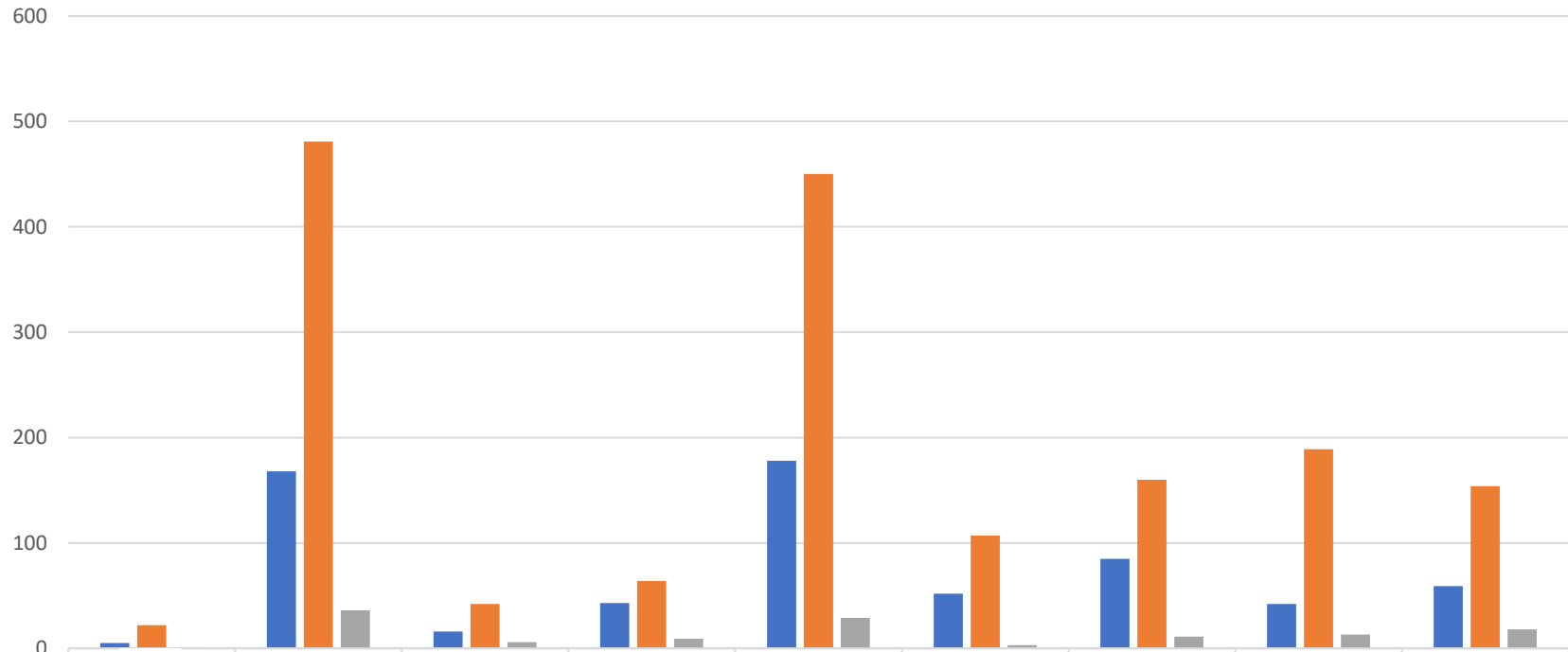
	CQSB	EMSB	ESSB	ETSB	LBPSB	NFSB	RSB	SWLSB	WQSB
PRE-K	3	48	5	11	21	20	8	6	8
KINDERGARTEN	5	120	14	30	147	37	54	40	48
GRADE 1	10	125	11	23	156	42	71	49	42
GARDE 2	2	131	16	24	126	29	50	48	47
GRADE 3	7	53	11	19	45	39	60	48	44
GRADE 4	4	134	14	32	129	29	42	50	49
GRADE 5	5	127	11	15	125	34	65	55	52
GRADE 6	3	126	11	17	131	24	43	53	48

### SECONDARY - What grade(s) is (are) your child(ren) in?



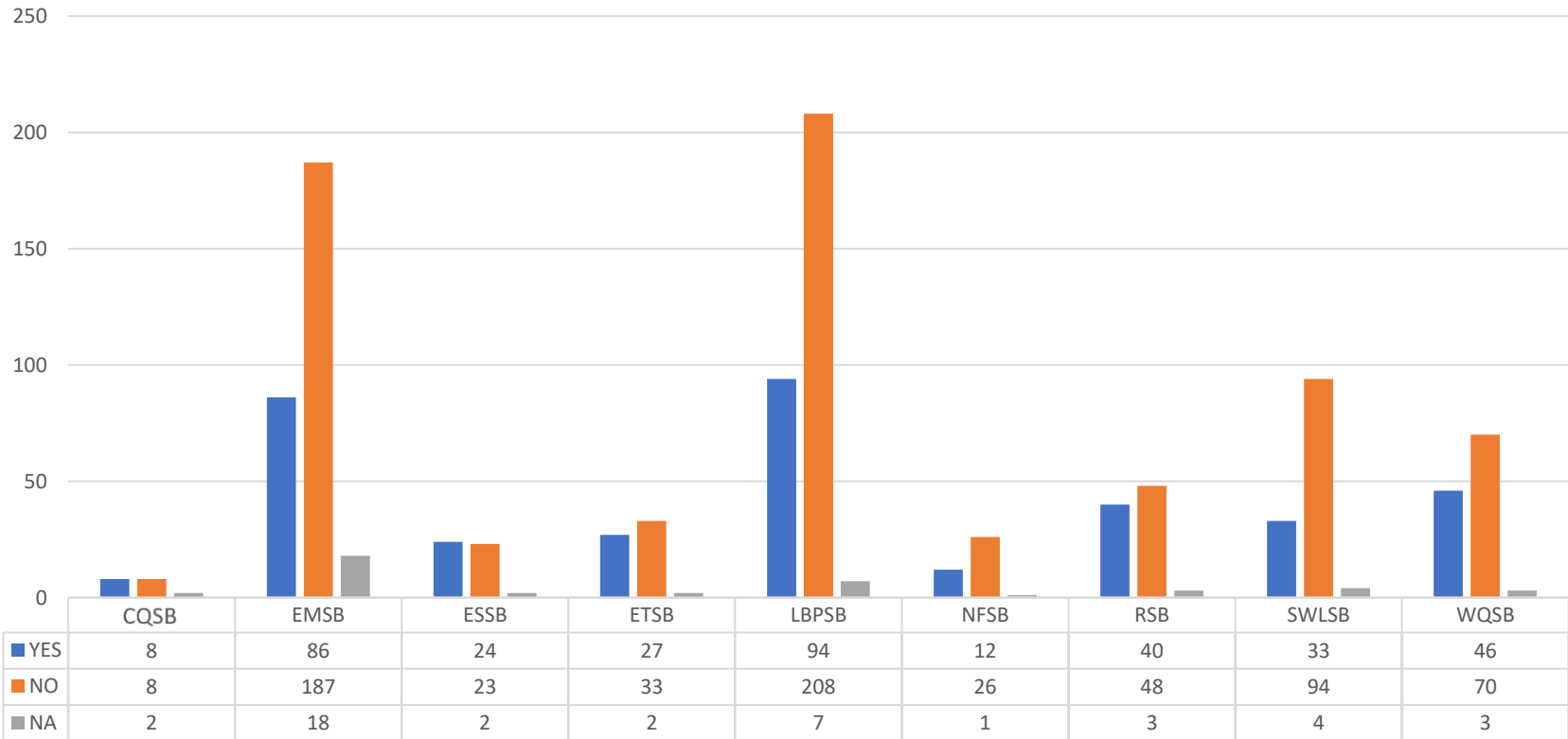
	CQSB	EMSB	ESSB	ETSB	LBPSB	NFSB	RSB	SWLSB	WQSB
SECONDARY 1	5	99	11	19	90	12	30	39	44
SECONDARY 2	5	71	16	18	87	13	23	42	36
SECONDARY 3	3	81	10	12	75	11	29	29	30
SECONDARY 4	3	60	16	16	73	9	10	30	20
SECONDARY 5	5	70	6	22	76	9	16	38	28

### ELEMENTARY - Does your child have an IEP?

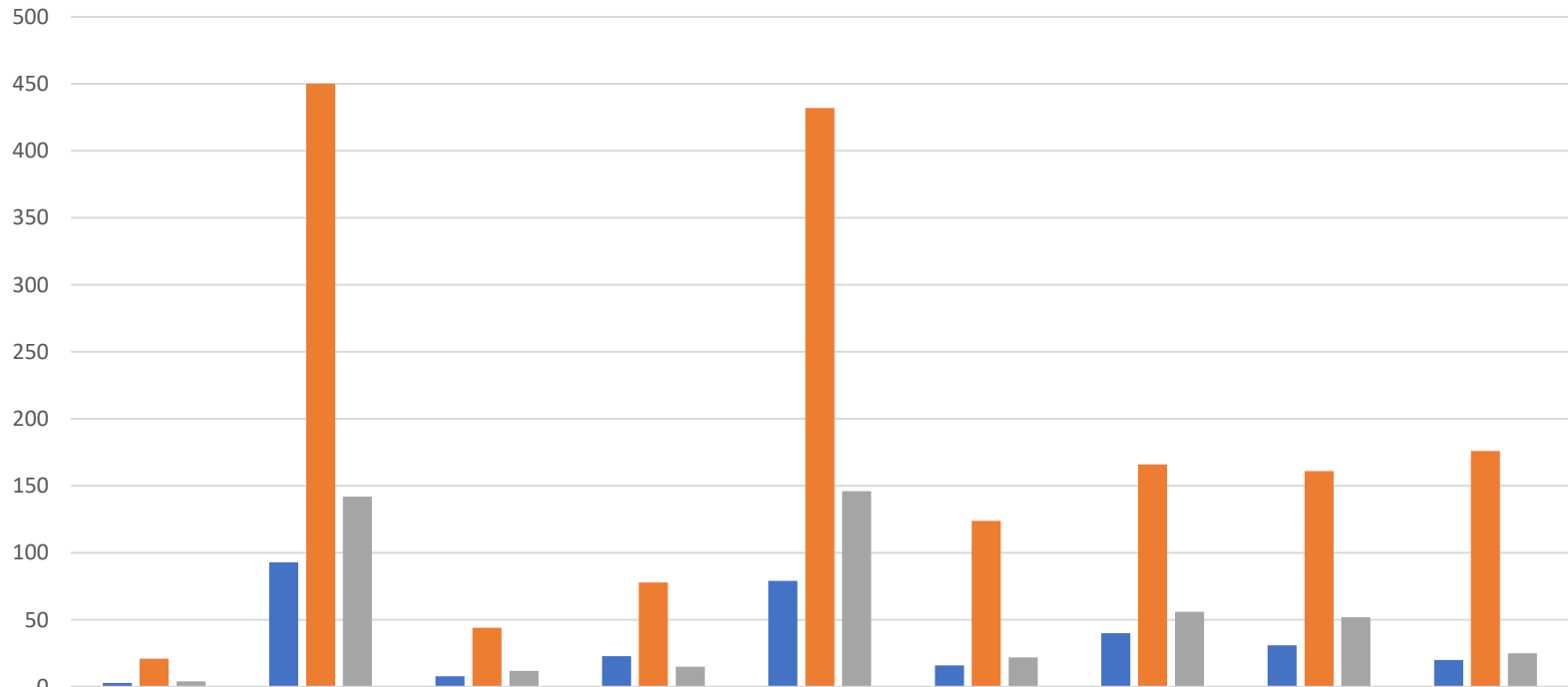


	CQSB	EMSB	ESSB	ETSB	LBPSB	NFSB	RSB	SWLSB	WQSB
■ YES	5	168	16	43	178	52	85	42	59
■ NO	22	481	42	64	450	107	160	189	154
■ NA	1	36	6	9	29	3	11	13	18

### SECONDARY - Does your child have an IEP?

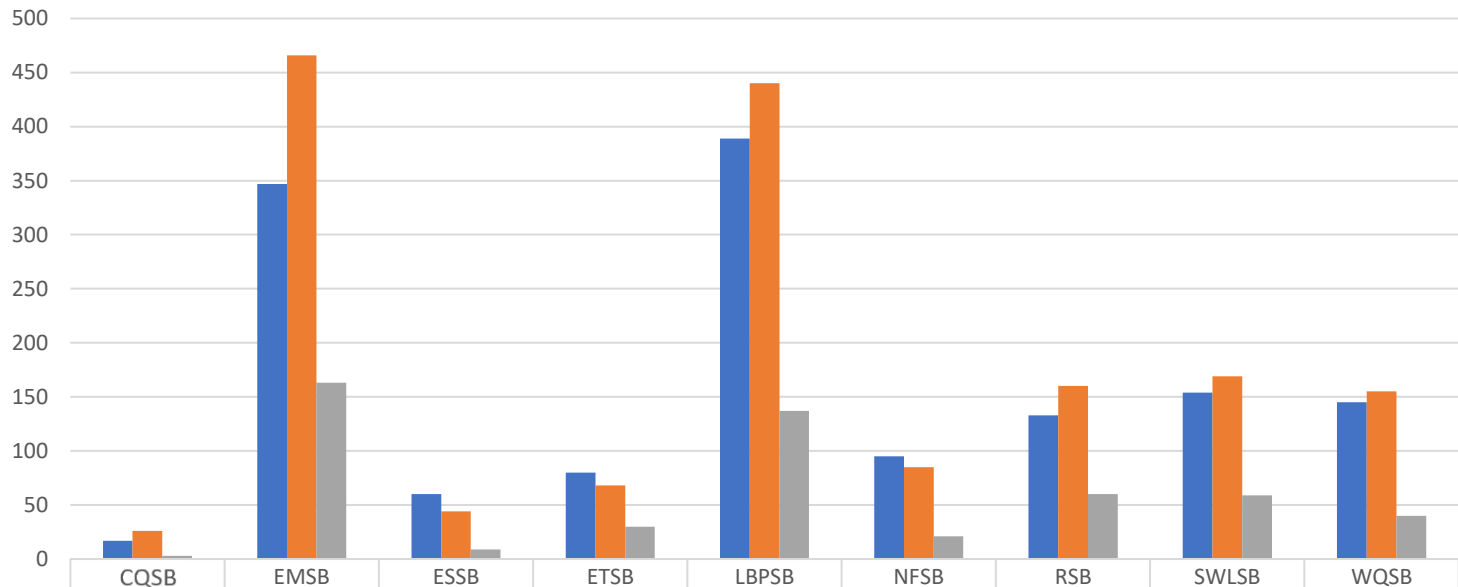


### ELEMENTARY - Will you be sending your child(ren) back to school?



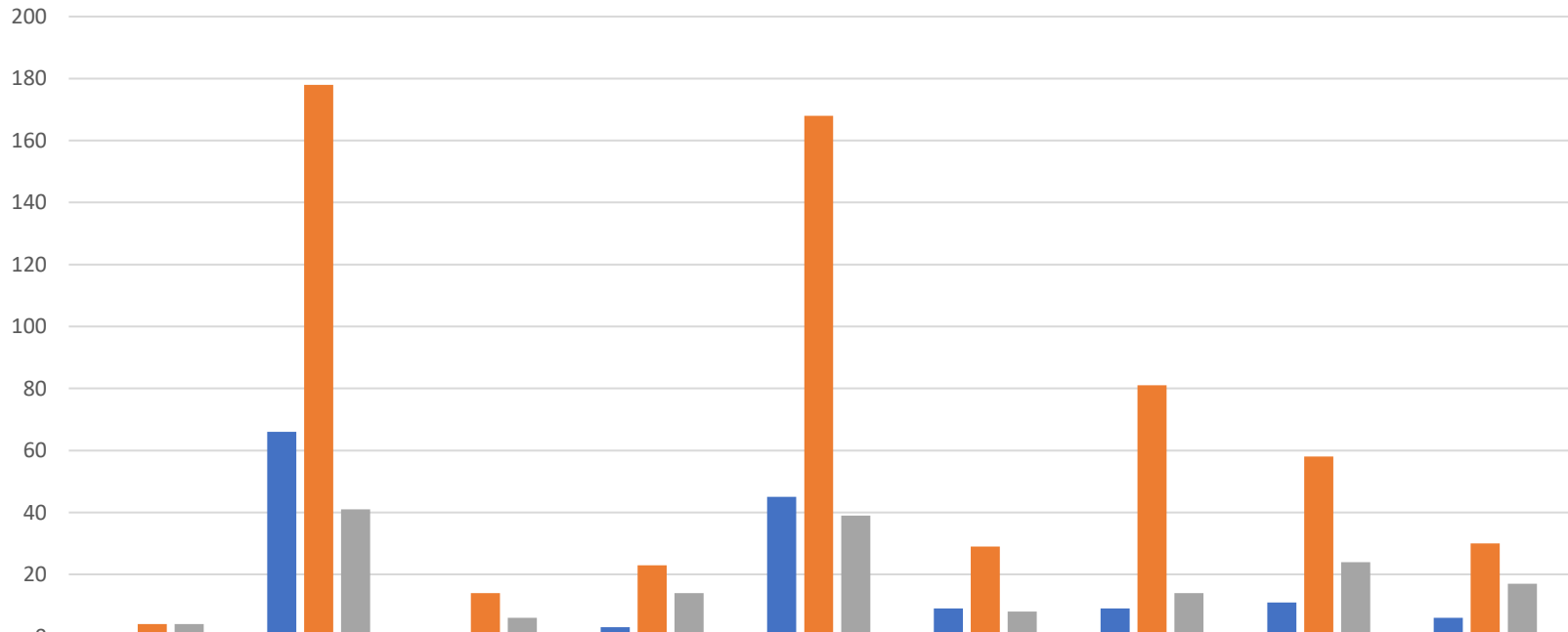
	CQSB	EMSB	ESSB	ETSB	LBPSB	NFSB	RSB	SWLSB	WQSB
YES	3	93	8	23	79	16	40	31	20
NO	21	450	44	78	432	124	166	161	176
UNDECIDED	4	142	12	15	146	22	56	52	25

**COMBINED - How important do you think it is for families that need to return to work, have access to a 'back to school' options for elementary aged students?**



	CQSB	EMSB	ESSB	ETSB	LBPSB	NFSB	RSB	SWLSB	WQSB
■ NOT NECESSARY	17	347	60	80	389	95	133	154	145
■ NECESSARY	26	466	44	68	440	85	160	169	155
■ ABSOLUTLY NECESSARY	3	163	9	30	137	21	60	59	40

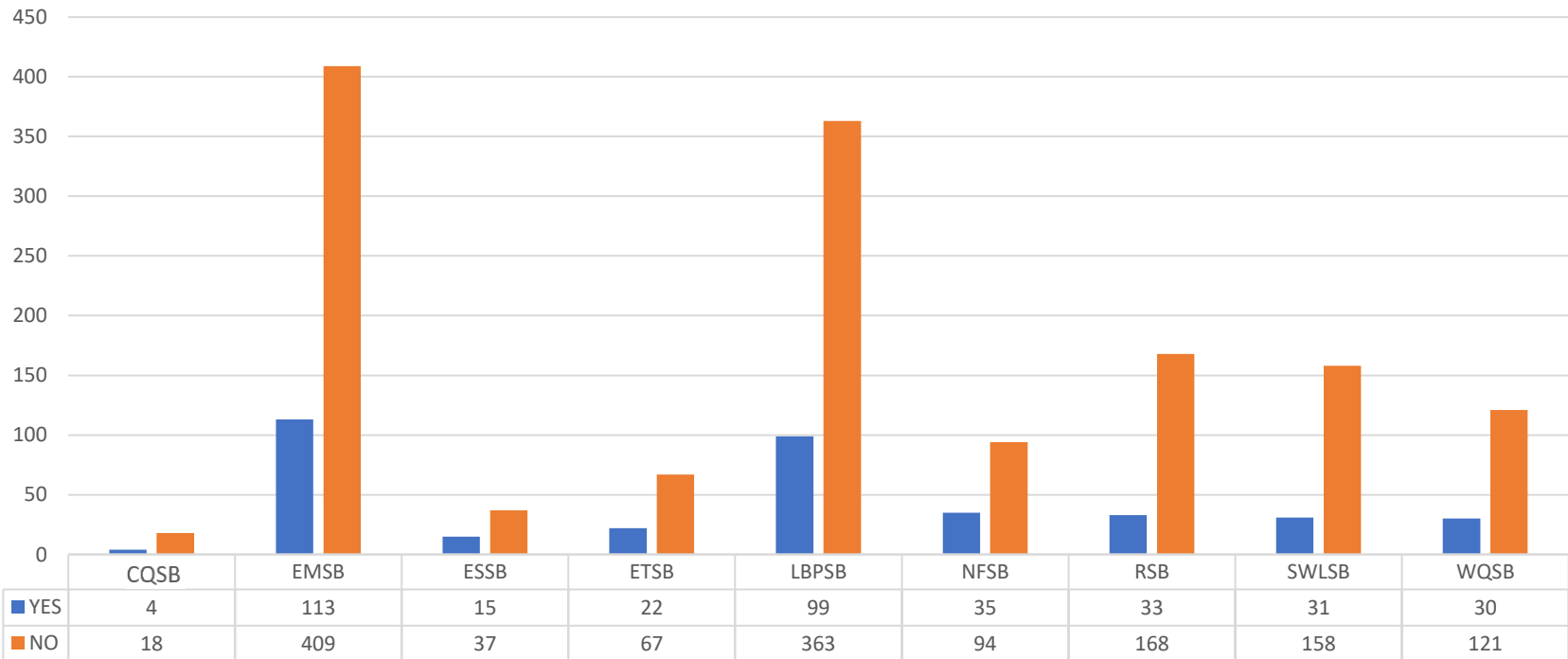
### ELEMENTARY - How will your child(ren) travel to school?



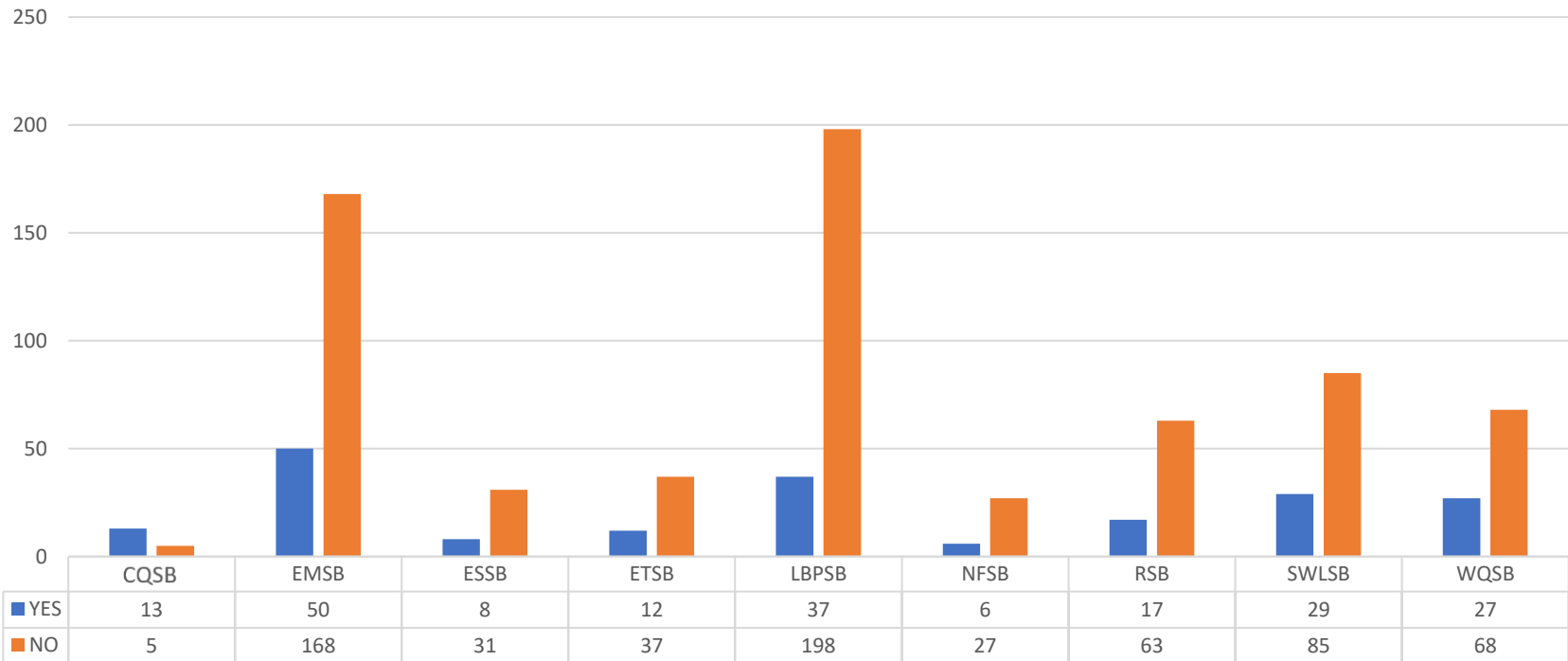
	CQSB	EMSB	ESSB	ETSB	LBPSB	NFSB	RSB	SWLSB	WQSB
■ BY FOOT	1	66	1	3	45	9	9	11	6
■ BY CAR	4	178	14	23	168	29	81	58	30
■ BY BUS	4	41	6	14	39	8	14	24	17



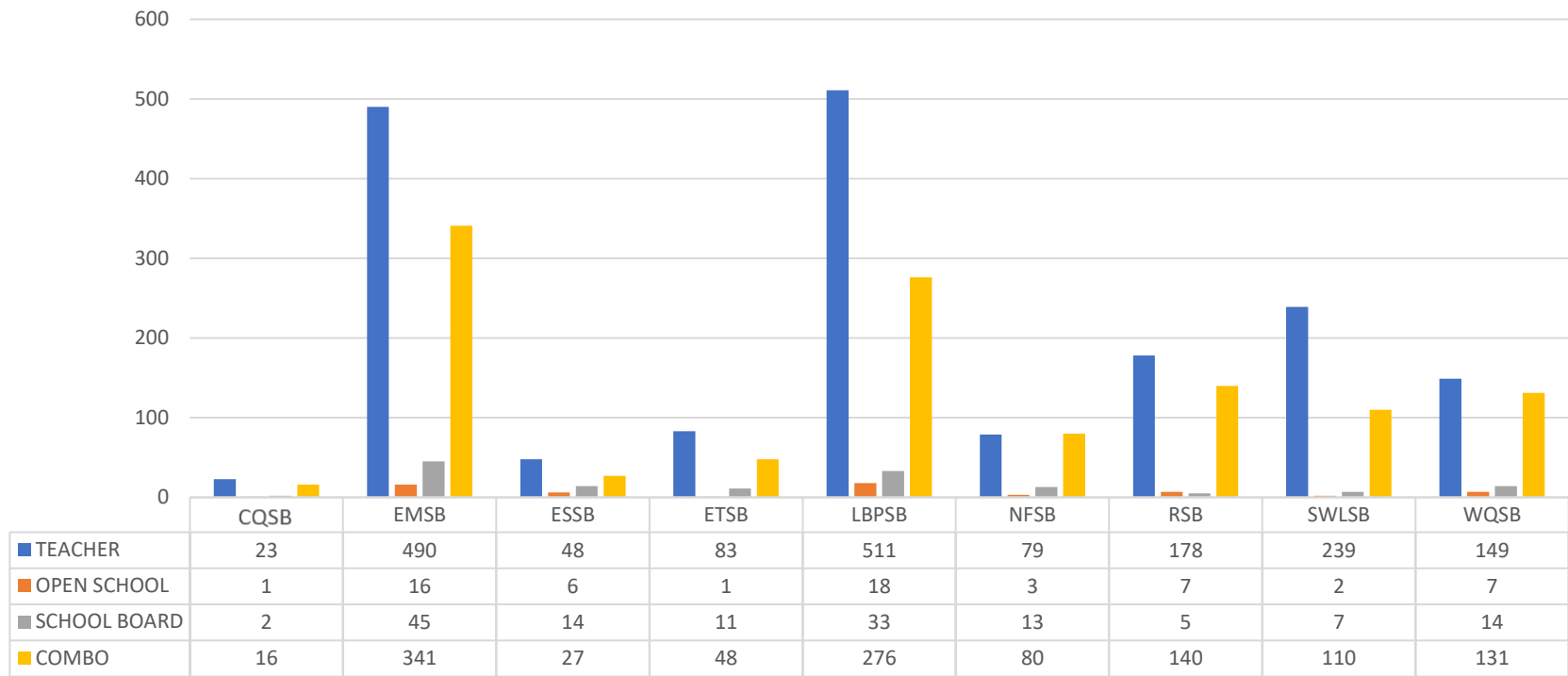
**ELEMENTARY - The Minister announced that electronic devices equipped with a data plan paid for by the Quebec government will be available to families in need. Will your family benefit from such a program?**



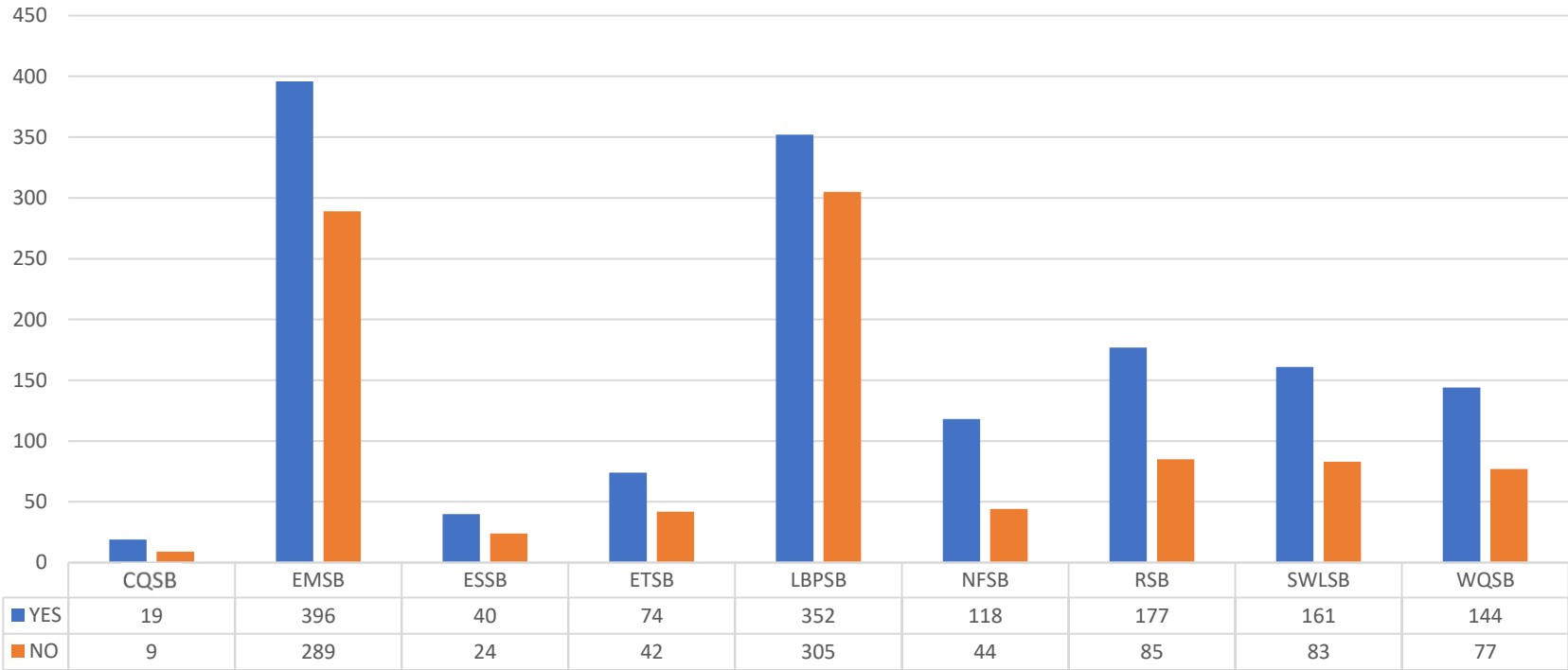
**SECONDARY - The Minister announced that electronic devices equipped with a data plan paid for by the Quebec government will be available to families in need. Will your family benefit from such a program?**



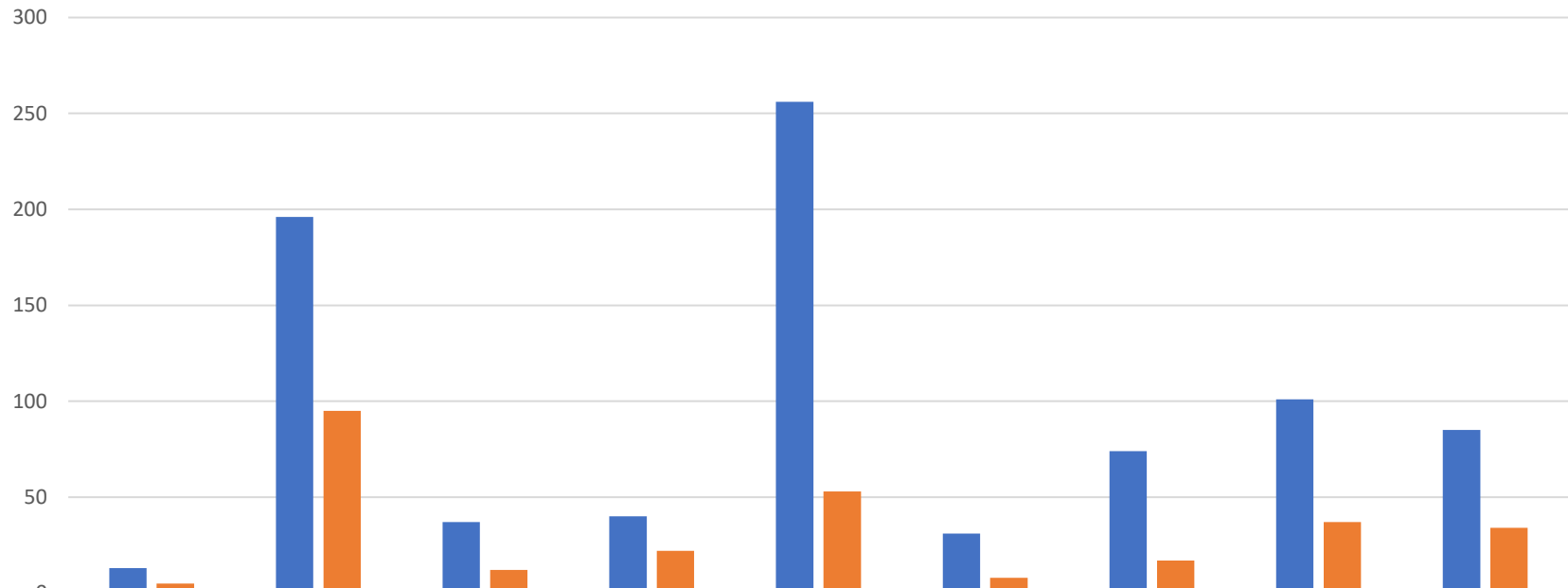
### COMBINED - Which online learning platform do(es) your child(ren) interact with the most and is most helpful?



### ELEMENTARY - Do(es) your child(ren) receive a satisfactory amount of online guidance and support?



### SECONDARY - Do you feel your child(ren) is(are) able to learn and work independently at home via online learning with a teacher?



	CQSB	EMSB	ESSB	ETSB	LBPSB	NFSB	RSB	SWLSB	WQSB
YES	13	196	37	40	256	31	74	101	85
NO	5	95	12	22	53	8	17	37	34